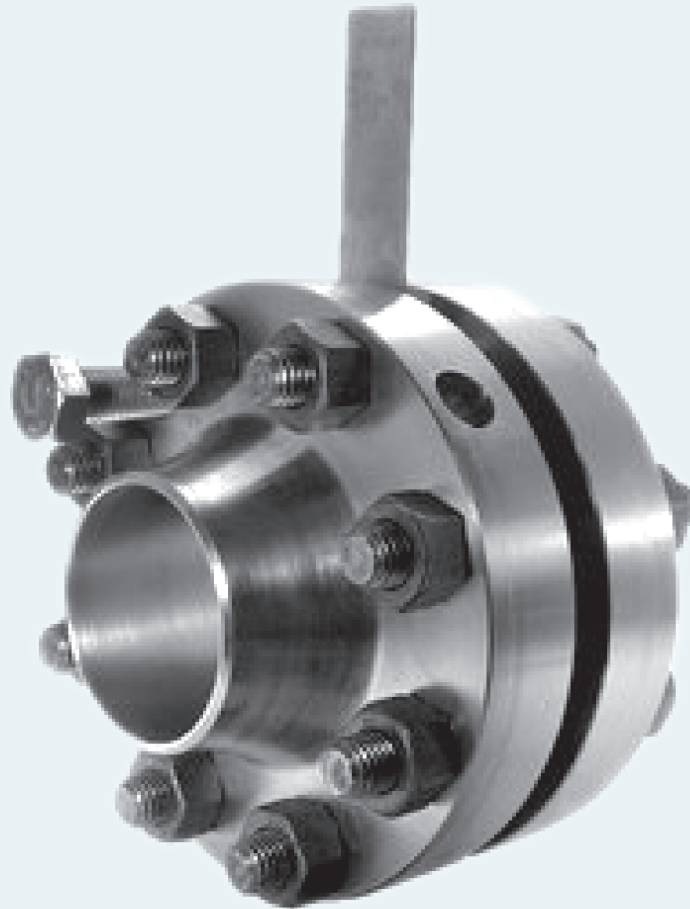


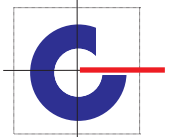
# ORIFICE PLATE ASSEMBLY



*The Orifice Plate With Flange Assemblies Are Employed For Measuring The Rate Of Flow Or Quantity Of Moving Fluids Like Liquids, Gases Or Vapours.*

*The Orifice Plates Are Designed As Per Bs 1042-1981 / Iso 5167 & L K. Spink Standards. When A Device Such As An Orifice Plate In A Pipe Line Through Which A Fluid Is Flowing, As Static Pressure Difference Exists Between The Upstream Side & The Downstream Side Of The Device Is Geometrically Similar To One On Which Direct Calibration Has Been Made, The Conditions Of Use Being The Same, The Rate Of Flow May Be Determined From A Knowledge Of The Circumstance Under Which The Device Is Being Used.*

**JAS-ANZ**



An ISO 9001:2015  
Certified Company

## TECHNICAL SPECIFICATION

ORIFICE PLATE	:	SS 316/ SS 314/ MONEL
LINE SIZE	:	15 NB TO 600 NB
FLANGES	:	ASTM-A-105/A182 /S 316/SS 314/ MONEL.
OPTIONAL	:	IBR APPROVED FLANGES
TYPE OF FLANGES	:	WELD NECK /SLIPON /SOCKET- WELD
TYPE OF TAPPING	:	FLANGE TAPS /CORNER TAPS/ RADIUS TAPS
SIZE OF TAPS	:	½ INCH NPT (F)
STUDS / BOLTS	:	ASTM-A-193 GR B7
NUTS	:	ASTM-A-193 GR 2H
GASKET	:	SPIRAL WOUND/CAF/ TEFLON



R-1 A,VILAS APPT, SANT TUKARAM  
PATH,KOPRI, THANE(E) 400 603,INDIA  
Fax: 91-22-2532 4845

**SPINK CONTROLS**®

Phone:91-22-2532 8223/24

Email:info@spinkcontrolsindia.com